

BESTMED

RELIEF FROM THE BURDEN

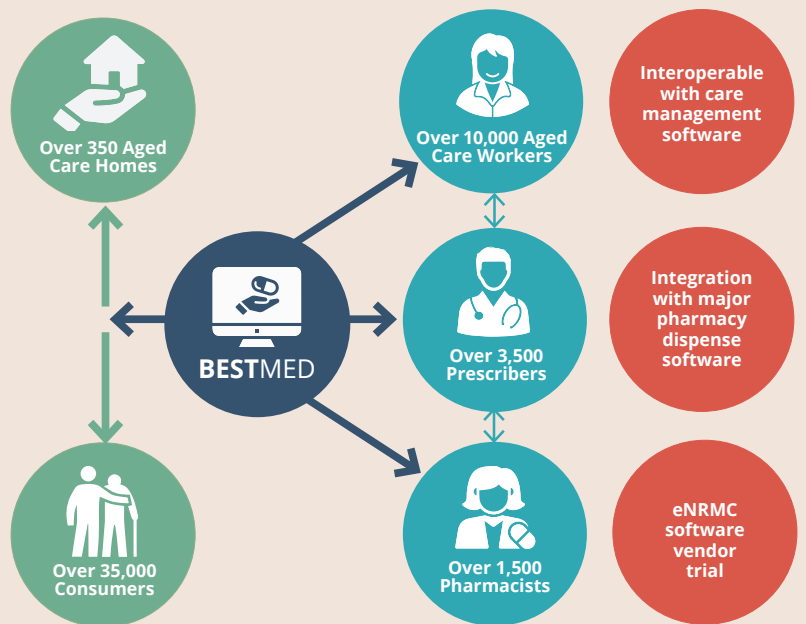
of manual medication management

IMPROVING CONSUMER CARE | REDUCING CLINICAL RISK | ENSURING COMPLIANCE

BESTMED supports aged care by using automation, intelligence and technology to deliver safer medication management practices and improved consumer outcomes.

We work with aged care homes across Australia, providing a medication management system that reduces clinical risk, ensures compliance and meets the legislative and regulatory requirements.

The **BESTMED** system creates individual consumer medication profiles (CMP) that capture detailed demographic data, medications, allergies and diagnoses. The profiles link to aged care, pharmacy and prescribers offering a single source of information that ensures accountability and compliance and minimises the risks associated with medication management and consumer harm.



BESTMED customers include:



'The 2019 Medicine Safety: Take Care report identified that 98% of people living in aged care facilities have at least one medication-related problem identified at review, up to 80% are prescribed potentially inappropriate medicine and 17% of unplanned hospital admissions by people living in aged-care facilities are caused by an inappropriate medicine'

BESTMED is a cloud-based platform accessible remotely and on all hardware that enables aged care organisations, prescribers and pharmacists to provide a safer, more transparent and efficient way to manage medication.

BESTMED efficiently combines ordering/prescribing, verifying, dispensing/delivering, administering, monitoring and reporting into a streamlined, easy-to-use process.

Implementing BESTMED medication management provides aged care organisations with a complete eco-system and automated workflows that can;

BESTMED	Clinical Safety & Quality	Compliance & Governance	Operational Efficiencies
Provide aged care with the necessary data, analysis and insights to ensure and enhance the residents' safety and quality of life and identify trends and potential risks that may lead to non-compliance and resident harm.	✓	✓	✓
Through zero transcribing between aged care, prescriber and pharmacist you can decrease risks and increase the visibility and the accountability that is associated with medication errors .	✓	✓	✓
Manage, monitor and report on the use of psychotropic medication as a pharmacological restrictive practice and as a reportable serious incident. Report examples include: <ul style="list-style-type: none"> - ACQSC Psychotropic Tool - Psychotropic drug usage - Psychotropic drug effectiveness The BESTMED Psychotropic Module collects all the information required at the prescribing stage including consent to ensure compliance and manage restricted substance use .	✓	✓	✓
Manage, monitor and report on antimicrobials through the BESTMED Antimicrobial Module. The module collects the relevant information at the prescribing stage, such as indication, duration and pathology.	✓	✓	✓
Support you in managing, monitoring and reducing polypharmacy improving your residents' health outcomes through detailed reporting.	✓	✓	✓
Produce data, analysis and reports for: <ul style="list-style-type: none"> - National Quality Indicators - Unannounced assessment visits and accreditation - Serious Incident Response Scheme (SIRS) 	✓	✓	✓
Support you in managing PRN usage and ensuring that you are monitoring frequency and reason for administering.	✓	✓	✓
Assist you in tailoring medication rounds to allow total flexibility for your resident's choice and timely provision of their medication.	✓	✓	✓
Alert and escalate medication interactions and incidents, and receive reminders for; new prescriptions, follow-up consultations or the need to review residents' medication charts. The system can add decision support rules and delegated authority to aid in the prescribing/administration of medications.	✓	✓	✓
Ensure best practices, clarity and transparency across your clinical team, Clinical Governance Committee and the MAC team, and make evidence-based decisions.	✓	✓	✓
Help to inform your consumers' care and services plans , your home's risk register and your Plan for Continuous Improvement (PCI) through detailed resident profiles and risk profiling.	✓	✓	✓
Increase efficiencies and reduce the administrative burden in areas such as labour costs, time spent on medication rounds, calls to health professionals and completing paper charts. These efficiencies allow increased time for meaningful engagement with residents .	✓	✓	✓
Decrease indirect operating costs such as consumables (papers, printing, call charges).			✓

What our customers are saying;

Since implementing BESTMED the transparency between aged care, pharmacy and GPs and the ability to produce real time reports has meant a significant increase in the use of alternative therapies which has led to an improvement in behaviour management, improved nutrition and hydration and a reduction in falls.

BESTMED have been responsive to Government directives and legislation which has really assisted us in meeting our provider obligations.

Since implementing BESTMED we have seen a 40% reduction in medication errors over a 3 month period.

We showcased BESTMED at a Resident Relative meeting as a new platform we would be implementing, the response was very positive, the families were supportive. It's been a welcomed addition to all stakeholders.

BESTMED

To book a demonstration or find out more, please contact us directly on info@bestmed.com.au or call 02 9637 3797

